

Bumblebee, Bumblebee

An “I Spy” environmental observation and guessing game

Ages: All

Time: 20 minutes

Bumblebee, Bumblebee is a great way to introduce children to bumblebees’ observation abilities.

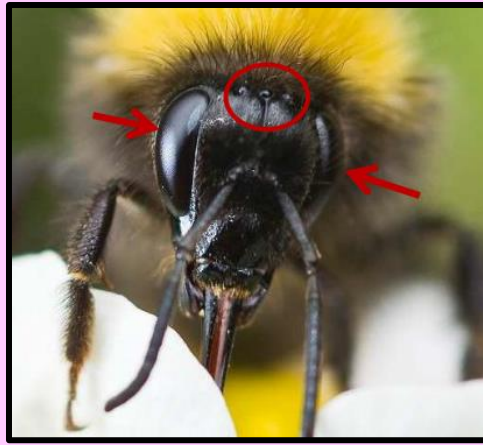
Here’s How:

- 1.** Two or more players stand together and **slowly turn around in a circle to observe the landscape** around them. Suggested play sites are the Meadow and the Children’s Discovery Forest.
- 2.** **One person is chosen to be the first Bumblebee** (youngest, oldest, tallest, etc.)
- 3.** The **Bumble Bee chooses one object they see that they want the other players to guess**. Don’t look at the object, and don’t say out loud what it is!
- 4.** The **Bumble Bee says, “Bumblebee, Bumblebee, here is what I see. I see something _____.”** Fill in the blank with one clue, based on the object’s color or size or texture or name (rhymes with), or another feature.
- 5.** **Players each get one guess**. If no one guesses the object, then the Bumblebee repeats “Bumblebee, Bumblebee, here is what I see. I see something _____.” Fill in the blank with another clue. Players try again to guess.
- 6.** **Whoever guesses correctly gets to be the next Bumblebee**. Be sure that everyone has a turn to be the Bumblebee.

The Back Story:

Playing Bumblebee, Bumblebee strengthens children’s observation skills and vocabulary as they learn to notice and describe features of nature objects around them.

Bumblebees have amazing vision. They have five eyes. Two eyes, one on each side of their head, help Bumblebees see colors and movement. They use these eyes to find flowers that provide pollen and nectar, which is their food.



Bumblebees see colors different than we do. The below photos are of the very same flower; they show what we see and what the bee sees:



The left-hand photo shows what we see: a pink flower with yellow center. The right-hand photo shows what the bumblebee sees: a green flower with white markings and a blue center. The white markings are like arrows pointing the bee to the center of the flower where the pollen and nectar are located. The pollen and nectar are as beautiful to bees as the pink color is to us!

Bumblebees also have three small eyes on the top of their heads. These help bees see sunlight and find their way to flowers and home to their nest.